

DUCT FANS

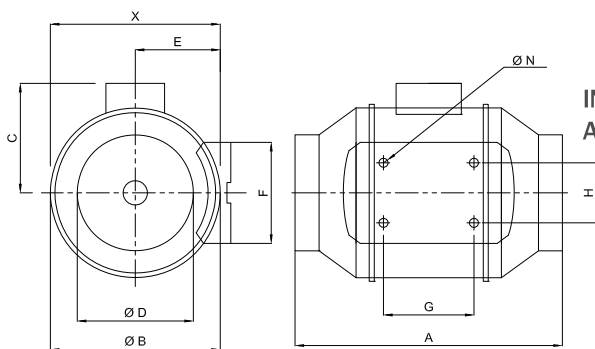


BMFX

IN LINE DUCT FANS Mixed Flow

The low profile of the range makes them the most effective solution for installations where space is restricted. Mixed flow duct fans are able to supply high air volume with low sound levels. The unique design of the support bracket allows the central cartridge, holding the motor and impeller assembly, to be fitted or removed without dismantling the ductwork.

Technical Drawings



MATERIAL

: Range of in-line mix flow duct fans are made of polypropylene plastic, one-time disposable molded, with high anti-acid function (from BMFX 100 to BMFX 200 models) or with metal casing steel finished with electrostatic powder paint (from BMFX 250 to BMFX 315 models).

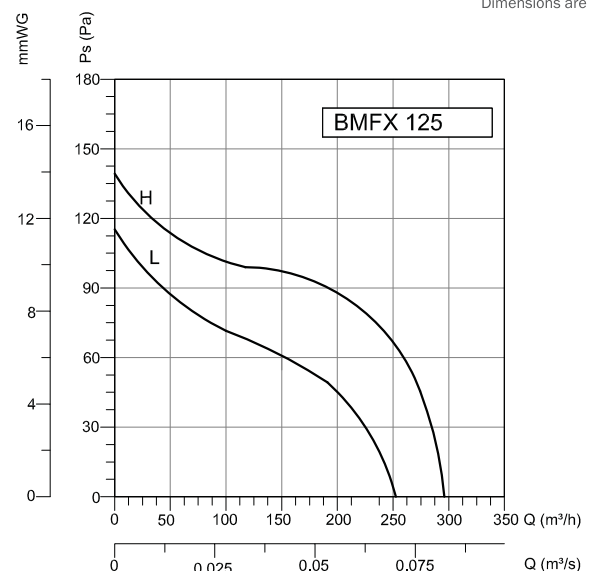
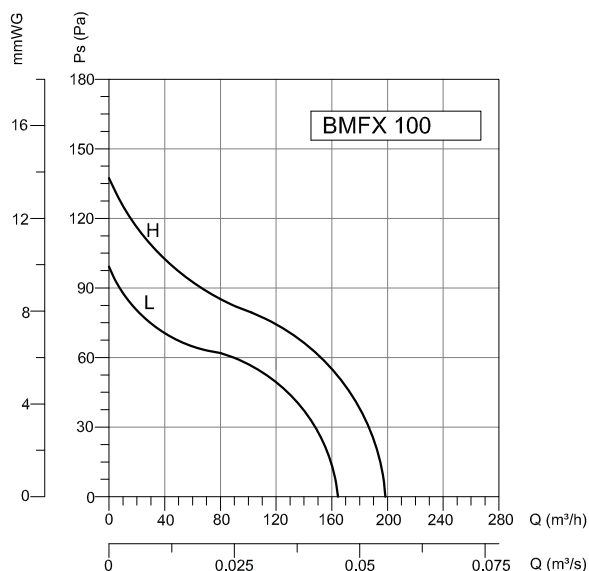
: IP44 Protection Class

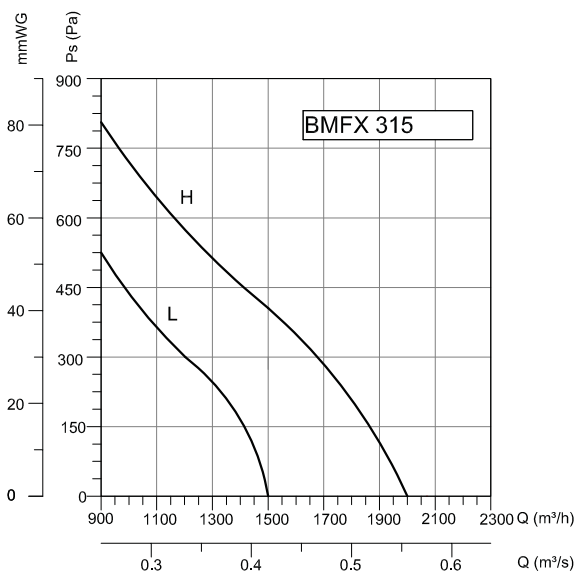
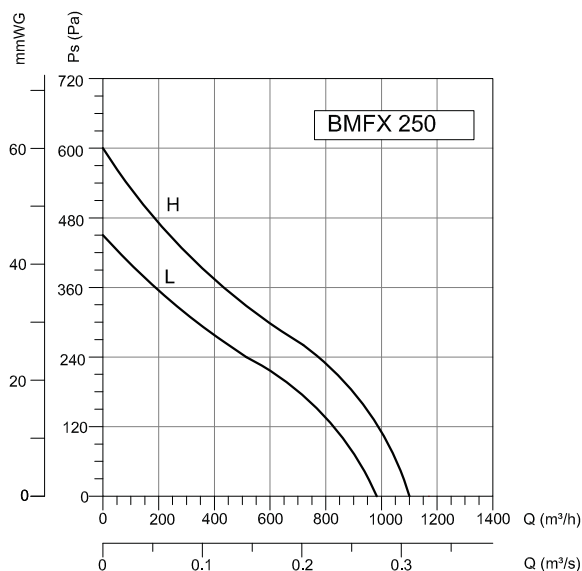
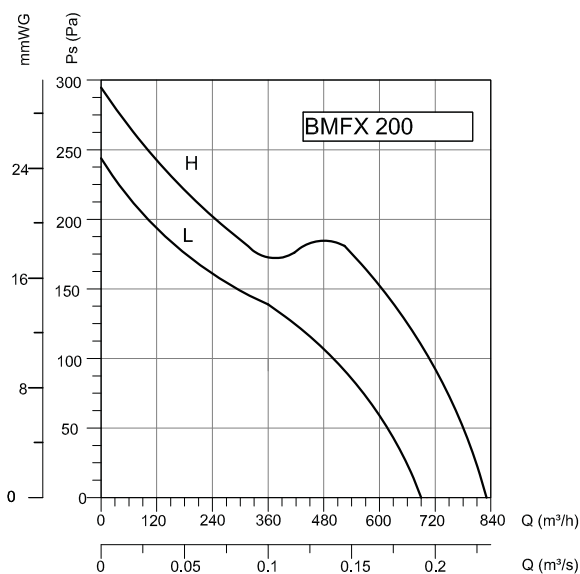
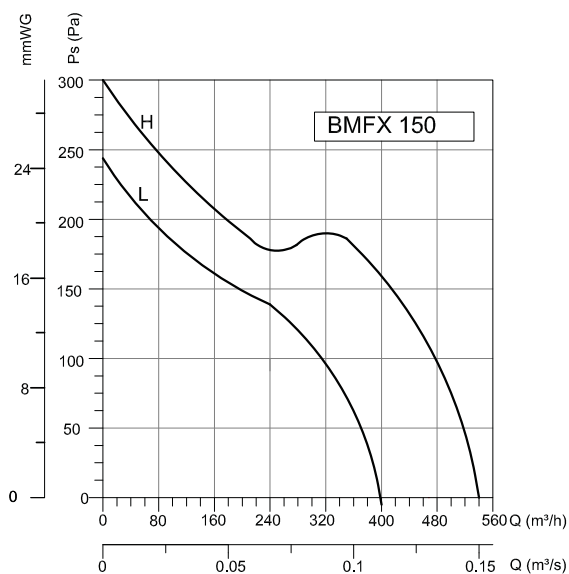
INSULATION CLASS APPLICATION AREAS

: Practical examples of installation of the BMFX mix flow fans range. The BMFX fans provide a large number of solutions for small and large ventilations. Residential-Kitchen, Domestic-Range Hood Exhaust, Commercial-Office, Industrial-Republic Restroom, School-Dining Hall, Industrial-Locker Room Health-Waiting Room, Meeting Room, Catering, Gym, Bathroom, Study Room.

TYPE	X	A	B	C	D	E	F	G	H	N
BMFX 100	188	303	176	115	97	100	90	80	60	5,5
BMFX 125	188	258	176	115	123	100	90	80	60	5,5
BMFX 150	212	320	200	127	147	112	130	80	60	5,5
BMFX 200	232,5	302	217	141	197	124	140	100	94	5,5
BMFX 250	291	386	272	192	248	155	168	145	140	7X4
BMFX 315	356	450	336	224	312	188	210	182	178	7X4

Dimensions are in (mm)





TYPE	VOLTAGE	FREQUENCY	POWER	CURRENT	CAPACITOR	SPEED	AIR FLOW	SOUND PRESSURE LEVEL	WEIGHT
	V	Hz	W	(A)	(μF)	d/d	m³/h	dB(A)	kg
BMFX 100	230	50	26 23	0,12 0,11	1	2200 1850	198 165	31 26	2
BMFX 125	230	50	33 28	0,14 0,13	1	2250 1850	284 248	31 26	1,8
BMFX 150	230	50	54 48	0,24 0,21	1,5	2550 1850	530 410	33 29	2,7
BMFX 200	230	50	125 123	0,57 0,52	3	2450 1950	840 690	63 55	4,9
BMFX 250	230	50	170 125	0,5 0,45	8	2750 2400	1100 990	60 58	9,4
BMFX 315	230	50	200 140	0,9 0,64	10	2680 2150	2000 1500	70 65	14